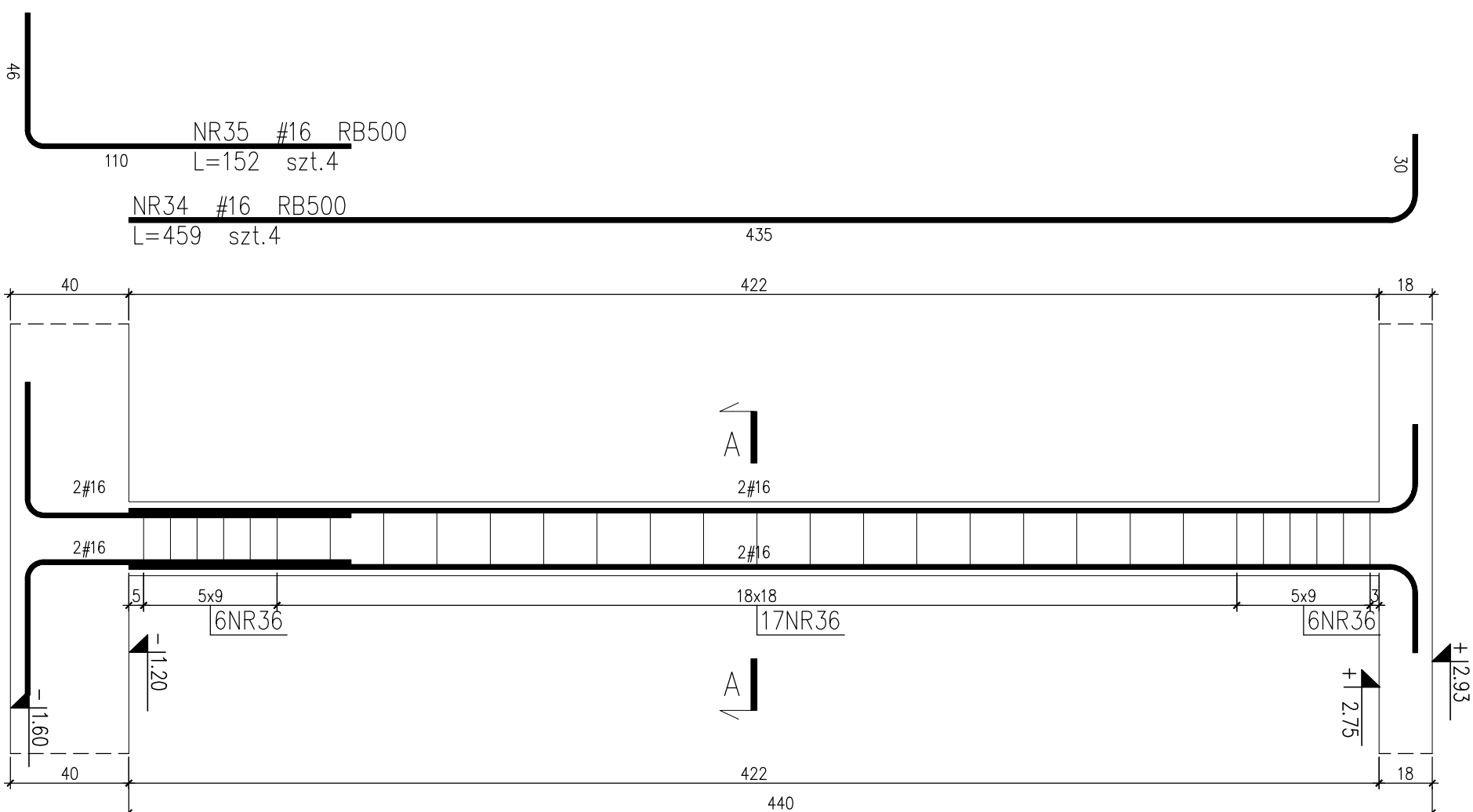


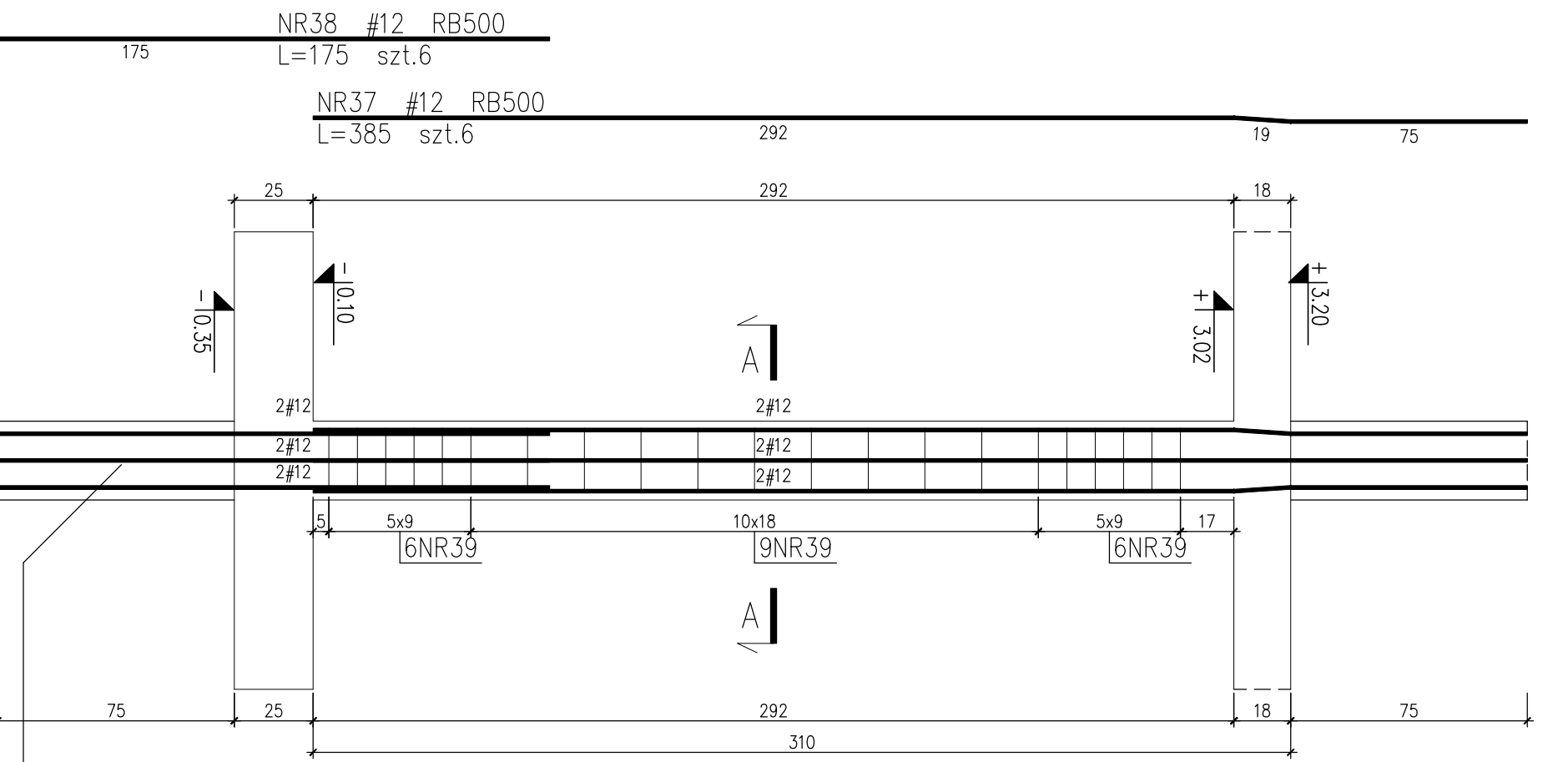
SKUP ŻELBETOWY SZ-18 -3 szt.



ZES AMINE SAL									
Pro	9	Sol	Disapp	Isol	Disapp				
			pristina	pristina	pristina	pristina	pristina	pristina	pristina
			[g]	[g]	[g]	[g]	[g]	[g]	[g]
24	16	85800	459	4	1	4	18.6		
25	16	85800	459	4	1	4	18.6		
26	16	85800	459	4	1	4	18.6		
27	16	85800	459	4	1	4	18.6		
28	16	85800	459	4	1	4	18.6		
29	16	85800	459	4	1	4	18.6		
30	16	85800	459	4	1	4	18.6		
31	16	85800	459	4	1	4	18.6		
32	16	85800	459	4	1	4	18.6		
33	16	85800	459	4	1	4	18.6		
34	16	85800	459	4	1	4	18.6		
35	16	85800	459	4	1	4	18.6		
36	16	85800	459	4	1	4	18.6		
37	16	85800	459	4	1	4	18.6		
38	16	85800	459	4	1	4	18.6		
39	16	85800	459	4	1	4	18.6		
40	16	85800	459	4	1	4	18.6		
41	16	85800	459	4	1	4	18.6		
42	16	85800	459	4	1	4	18.6		
43	16	85800	459	4	1	4	18.6		
44	16	85800	459	4	1	4	18.6		
45	16	85800	459	4	1	4	18.6		
46	16	85800	459	4	1	4	18.6		
47	16	85800	459	4	1	4	18.6		
48	16	85800	459	4	1	4	18.6		
49	16	85800	459	4	1	4	18.6		
50	16	85800	459	4	1	4	18.6		
51	16	85800	459	4	1	4	18.6		
52	16	85800	459	4	1	4	18.6		
53	16	85800	459	4	1	4	18.6		
54	16	85800	459	4	1	4	18.6		
55	16	85800	459	4	1	4	18.6		
56	16	85800	459	4	1	4	18.6		
57	16	85800	459	4	1	4	18.6		
58	16	85800	459	4	1	4	18.6		
59	16	85800	459	4	1	4	18.6		
60	16	85800	459	4	1	4	18.6		
61	16	85800	459	4	1	4	18.6		
62	16	85800	459	4	1	4	18.6		
63	16	85800	459	4	1	4	18.6		
64	16	85800	459	4	1	4	18.6		
65	16	85800	459	4	1	4	18.6		
66	16	85800	459	4	1	4	18.6		
67	16	85800	459	4	1	4	18.6		
68	16	85800	459	4	1	4	18.6		
69	16	85800	459	4	1	4	18.6		
70	16	85800	459	4	1	4	18.6		
71	16	85800	459	4	1	4	18.6		
72	16	85800	459	4	1	4	18.6		
73	16	85800	459	4	1	4	18.6		
74	16	85800	459	4	1	4	18.6		
75	16	85800	459	4	1	4	18.6		
76	16	85800	459	4	1	4	18.6		
77	16	85800	459	4	1	4	18.6		
78	16	85800	459	4	1	4	18.6		
79	16	85800	459	4	1	4	18.6		
80	16	85800	459	4	1	4	18.6		
81	16	85800	459	4	1	4	18.6		
82	16	85800	459	4	1	4	18.6		
83	16	85800	459	4	1	4	18.6		
84	16	85800	459	4	1	4	18.6		
85	16	85800	459	4	1	4	18.6		
86	16	85800	459	4	1	4	18.6		
87	16	85800	459	4	1	4	18.6		
88	16	85800	459	4	1	4	18.6		
89	16	85800	459	4	1	4	18.6		
90	16	85800	459	4	1	4	18.6		
91	16	85800	459	4	1	4	18.6		
92	16	85800	459	4	1	4	18.6		
93	16	85800	459	4	1	4	18.6		
94	16	85800	459	4	1	4	18.6		
95	16	85800	459	4	1	4	18.6		
96	16	85800	459	4	1	4	18.6		
97	16	85800	459	4	1	4	18.6		
98	16	85800	459	4	1	4	18.6		
99	16	85800	459	4	1	4	18.6		
100	16	85800	459	4	1	4	18.6		

UNCLAS : Samplings from pristina and disappo pristina to be priso
UNCLAS B : 99-PR-CN-90-736E-2006

SKUP ŻELBETOWY SZ-19 -8 szt.



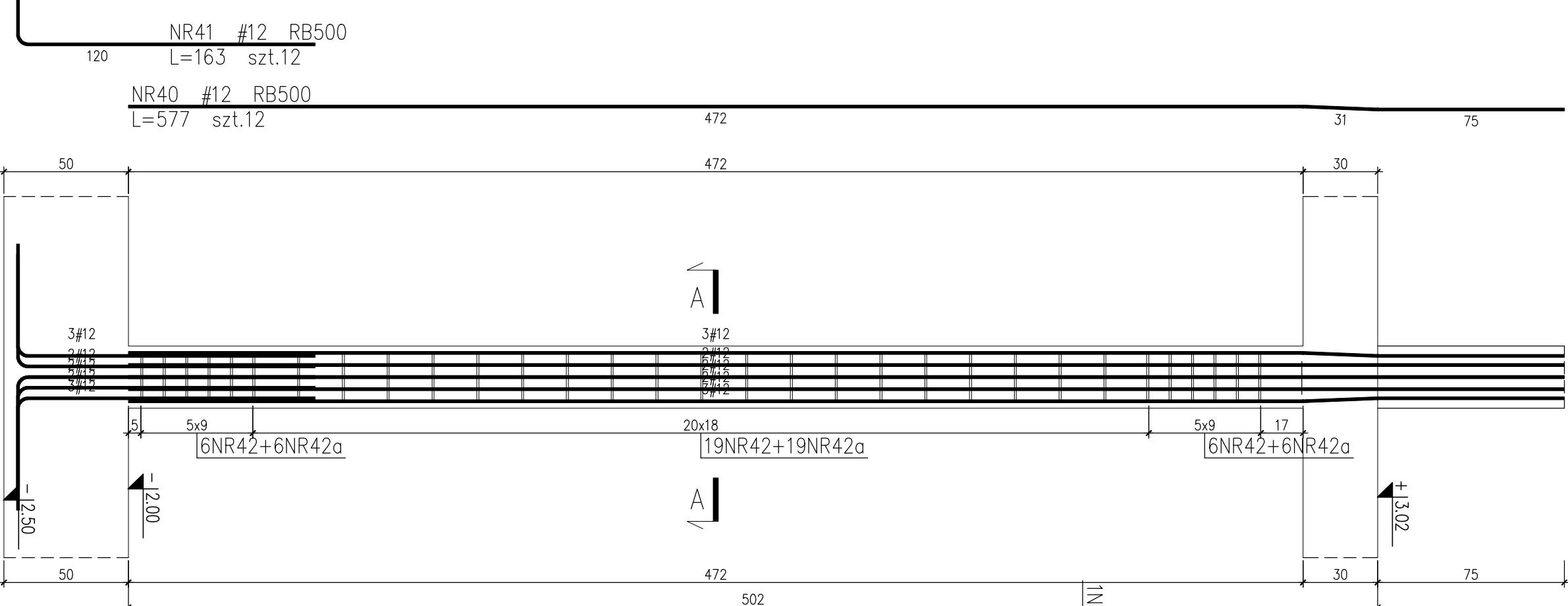
ZESTAWIENIE STAJ

Nr	Id	Dziś prośba pozi	leż	Dziś prośba pozi	Słysz- ne
1	1	1	1	1	1
3/1	12	88/100	385	6	1
3/2	12	88/100	385	6	1
3/3	12	88/100	385	6	1
3/4	12	88/100	385	6	1
3/5	12	88/100	385	6	1
3/6	12	88/100	385	6	1
3/7	12	88/100	385	6	1
3/8	12	88/100	385	6	1
3/9	12	88/100	385	6	1
3/10	12	88/100	385	6	1
3/11	12	88/100	385	6	1
3/12	12	88/100	385	6	1
3/13	12	88/100	385	6	1
3/14	12	88/100	385	6	1
3/15	12	88/100	385	6	1
3/16	12	88/100	385	6	1
3/17	12	88/100	385	6	1
3/18	12	88/100	385	6	1
3/19	12	88/100	385	6	1
3/20	12	88/100	385	6	1
3/21	12	88/100	385	6	1
3/22	12	88/100	385	6	1
3/23	12	88/100	385	6	1
3/24	12	88/100	385	6	1
3/25	12	88/100	385	6	1
3/26	12	88/100	385	6	1
3/27	12	88/100	385	6	1
3/28	12	88/100	385	6	1
3/29	12	88/100	385	6	1
3/30	12	88/100	385	6	1
3/31	12	88/100	385	6	1
3/32	12	88/100	385	6	1
3/33	12	88/100	385	6	1
3/34	12	88/100	385	6	1
3/35	12	88/100	385	6	1
3/36	12	88/100	385	6	1
3/37	12	88/100	385	6	1
3/38	12	88/100	385	6	1
3/39	12	88/100	385	6	1
3/40	12	88/100	385	6	1
3/41	12	88/100	385	6	1
3/42	12	88/100	385	6	1
3/43	12	88/100	385	6	1
3/44	12	88/100	385	6	1
3/45	12	88/100	385	6	1
3/46	12	88/100	385	6	1
3/47	12	88/100	385	6	1
3/48	12	88/100	385	6	1
3/49	12	88/100	385	6	1
3/50	12	88/100	385	6	1
3/51	12	88/100	385	6	1
3/52	12	88/100	385	6	1
3/53	12	88/100	385	6	1
3/54	12	88/100	385	6	1
3/55	12	88/100	385	6	1
3/56	12	88/100	385	6	1
3/57	12	88/100	385	6	1
3/58	12	88/100	385	6	1
3/59	12	88/100	385	6	1
3/60	12	88/100	385	6	1
3/61	12	88/100	385	6	1
3/62	12	88/100	385	6	1
3/63	12	88/100	385	6	1
3/64	12	88/100	385	6	1
3/65	12	88/100	385	6	1
3/66	12	88/100	385	6	1
3/67	12	88/100	385	6	1
3/68	12	88/100	385	6	1
3/69	12	88/100	385	6	1
3/70	12	88/100	385	6	1
3/71	12	88/100	385	6	1
3/72	12	88/100	385	6	1
3/73	12	88/100	385	6	1
3/74	12	88/100	385	6	1
3/75	12	88/100	385	6	1
3/76	12	88/100	385	6	1
3/77	12	88/100	385	6	1
3/78	12	88/100	385	6	1
3/79	12	88/100	385	6	1
3/80	12	88/100	385	6	1
3/81	12	88/100	385	6	1
3/82	12	88/100	385	6	1
3/83	12	88/100	385	6	1
3/84	12	88/100	385	6	1
3/85	12	88/100	385	6	1
3/86	12	88/100	385	6	1
3/87	12	88/100	385	6	1
3/88	12	88/100	385	6	1
3/89	12	88/100	385	6	1
3/90	12	88/100	385	6	1
3/91	12	88/100	385	6	1
3/92	12	88/100	385	6	1
3/93	12	88/100	385	6	1
3/94	12	88/100	385	6	1
3/95	12	88/100	385	6	1
3/96	12	88/100	385	6	1
3/97	12	88/100	385	6	1
3/98	12	88/100	385	6	1
3/99	12	88/100	385	6	1
3/100	12	88/100	385	6	1

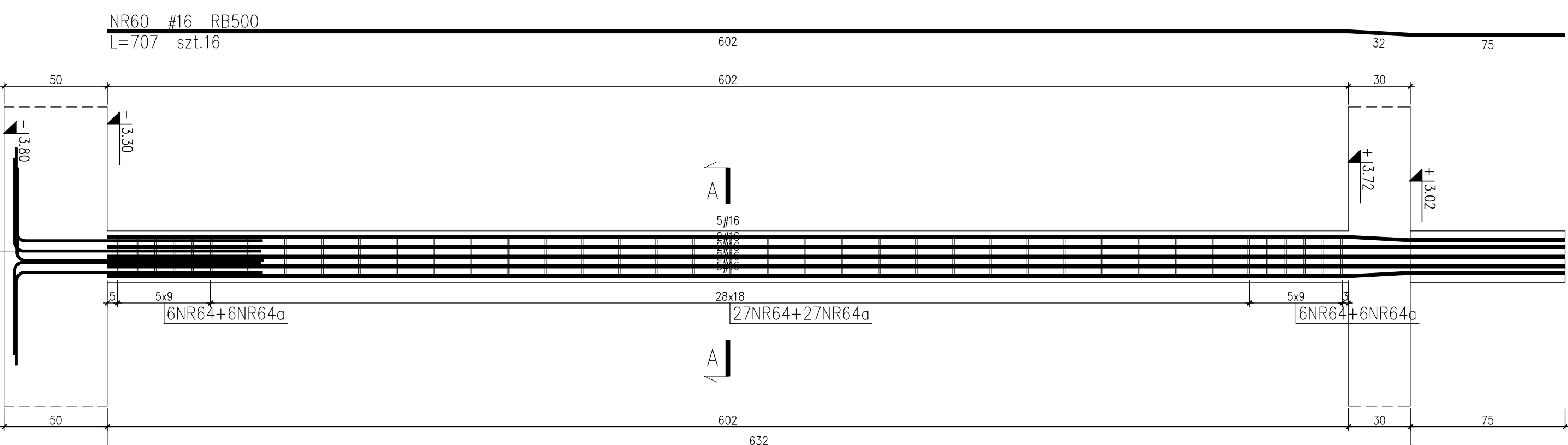
Uwagi: 1. Skomponowane działy prośb i dzięczynności w odrębnym

Uwagi: 2. Skomponowane działy prośb i dzięczynności w odrębnym

GRUPA ŻELBETOWY SZ-151 -2 szt.

[illegible]

GRUPA ZELBETOWY SZ-153, SZ-152

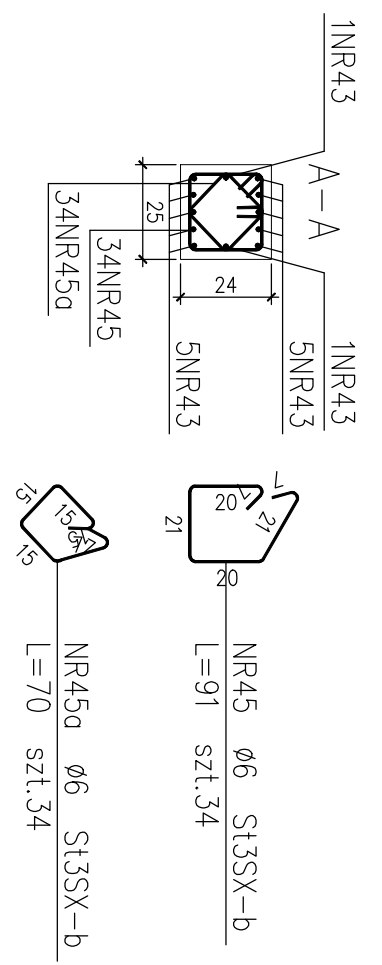


ZESAMENEN STAL

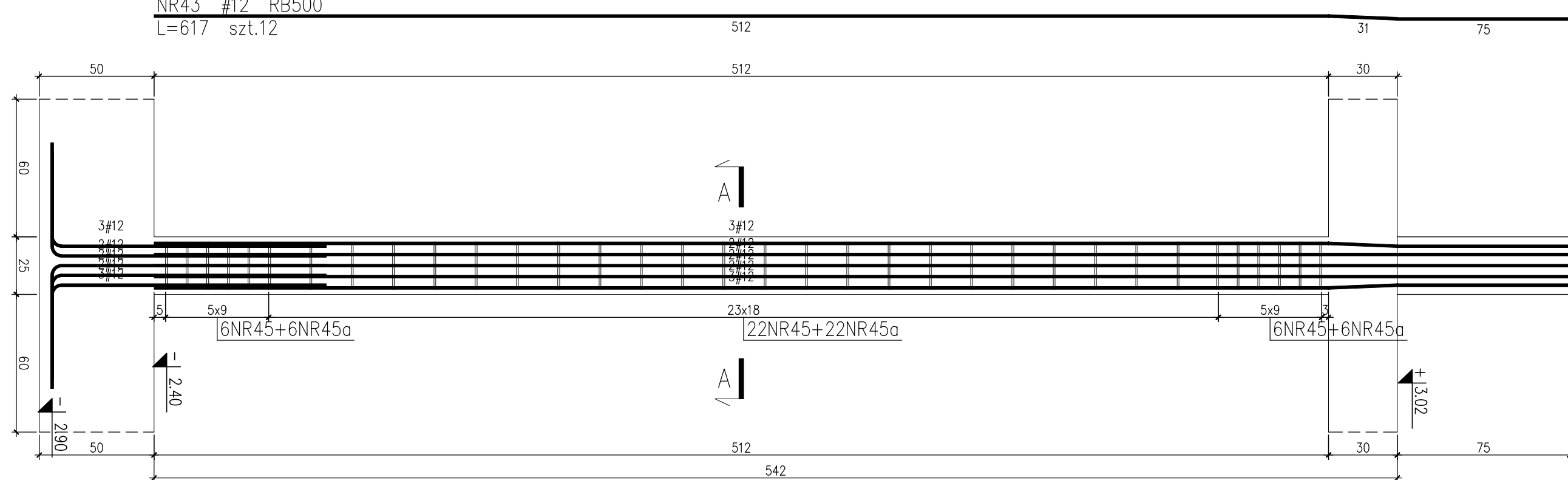
Nr	Ø	Stal	Dugaste petnja na 1 poz.	Izsek petnja proyzi na 1 poz.	Dugaste petnja na 1 poz.	Dugaste petnja na 1 poz.	Dugaste petnja na 1 poz.	Dugaste petnja na 1 poz.
60	16	HR5020	397	16	1	16	114,72	36,27
61	16	HR5020	397	16	1	16	114,72	36,27
62	16	HR5020	397	16	1	16	114,72	36,27
63	6	S1553-a	9	39	3	39	11,47	64,55
64	6	S1553-a	9	39	3	39	11,47	64,55
65	6	S1553-a	9	39	3	39	11,47	64,55
66	6	S1553-a	9	39	3	39	11,47	64,55
67	6	S1553-a	9	39	3	39	11,47	64,55
68	6	S1553-a	9	39	3	39	11,47	64,55
69	6	S1553-a	9	39	3	39	11,47	64,55
70	6	S1553-a	9	39	3	39	11,47	64,55
71	6	S1553-a	9	39	3	39	11,47	64,55
72	6	S1553-a	9	39	3	39	11,47	64,55
73	6	S1553-a	9	39	3	39	11,47	64,55
74	6	S1553-a	9	39	3	39	11,47	64,55
75	6	S1553-a	9	39	3	39	11,47	64,55
76	6	S1553-a	9	39	3	39	11,47	64,55
77	6	S1553-a	9	39	3	39	11,47	64,55
78	6	S1553-a	9	39	3	39	11,47	64,55
79	6	S1553-a	9	39	3	39	11,47	64,55
80	6	S1553-a	9	39	3	39	11,47	64,55
81	6	S1553-a	9	39	3	39	11,47	64,55
82	6	S1553-a	9	39	3	39	11,47	64,55
83	6	S1553-a	9	39	3	39	11,47	64,55
84	6	S1553-a	9	39	3	39	11,47	64,55
85	6	S1553-a	9	39	3	39	11,47	64,55
86	6	S1553-a	9	39	3	39	11,47	64,55
87	6	S1553-a	9	39	3	39	11,47	64,55
88	6	S1553-a	9	39	3	39	11,47	64,55
89	6	S1553-a	9	39	3	39	11,47	64,55
90	6	S1553-a	9	39	3	39	11,47	64,55
91	6	S1553-a	9	39	3	39	11,47	64,55
92	6	S1553-a	9	39	3	39	11,47	64,55
93	6	S1553-a	9	39	3	39	11,47	64,55
94	6	S1553-a	9	39	3	39	11,47	64,55
95	6	S1553-a	9	39	3	39	11,47	64,55
96	6	S1553-a	9	39	3	39	11,47	64,55
97	6	S1553-a	9	39	3	39	11,47	64,55
98	6	S1553-a	9	39	3	39	11,47	64,55
99	6	S1553-a	9	39	3	39	11,47	64,55
100	6	S1553-a	9	39	3	39	11,47	64,55
101	6	S1553-a	9	39	3	39	11,47	64,55
102	6	S1553-a	9	39	3	39	11,47	64,55
103	6	S1553-a	9	39	3	39	11,47	64,55
104	6	S1553-a	9	39	3	39	11,47	64,55
105	6	S1553-a	9	39	3	39	11,47	64,55
106	6	S1553-a	9	39	3	39	11,47	64,55
107	6	S1553-a	9	39	3	39	11,47	64,55
108	6	S1553-a	9	39	3	39	11,47	64,55
109	6	S1553-a	9	39	3	39	11,47	64,55
110	6	S1553-a	9	39	3	39	11,47	64,55
111	6	S1553-a	9	39	3	39	11,47	64,55
112	6	S1553-a	9	39	3	39	11,47	64,55
113	6	S1553-a	9	39	3	39	11,47	64,55
114	6	S1553-a	9	39	3	39	11,47	64,55
115	6	S1553-a	9	39	3	39	11,47	64,55
116	6	S1553-a	9	39	3	39	11,47	64,55
117	6	S1553-a	9	39	3	39	11,47	64,55
118	6	S1553-a	9	39	3	39	11,47	64,55
119	6	S1553-a	9	39	3	39	11,47	64,55
120	6	S1553-a	9	39	3	39	11,47	64,55
121	6	S1553-a	9	39	3	39	11,47	64,55
122	6	S1553-a	9	39	3	39	11,47	64,55
123	6	S1553-a	9	39	3	39	11,47	64,55
124	6	S1553-a	9	39	3	39	11,47	64,55
125	6	S1553-a	9	39	3	39	11,47	64,55
126	6	S1553-a	9	39	3	39	11,47	64,55
127	6	S1553-a	9	39	3	39	11,47	64,55
128	6	S1553-a	9	39	3	39	11,47	64,55
129	6	S1553-a	9	39	3	39	11,47	64,55
130	6	S1553-a	9	39	3	39	11,47	64,55
131	6	S1553-a	9	39	3	39	11,47	64,55
132	6	S1553-a	9	39	3	39	11,47	64,55
133	6	S1553-a	9	39	3	39	11,47	64,55
134	6	S1553-a	9	39	3	39	11,47	64,55
135	6	S1553-a	9	39	3	39	11,47	64,55
136	6	S1553-a	9	39	3	39	11,47	64,55
137	6	S1553-a	9	39	3	39	11,47	64,55
138	6	S1553-a	9	39	3	39	11,47	64,55
139	6	S1553-a	9	39	3	39	11,47	64,55
140	6	S1553-a	9	39	3	39	11,47	64,55
141	6	S1553-a	9	39	3	39	11,47	64,55
142	6	S1553-a	9	39	3	39	11,47	64,55
143	6	S1553-a	9	39	3	39	11,47	64,55
144	6	S1553-a	9	39	3	39	11,47	64,55
145	6	S1553-a	9	39	3	39	11,47	64,55
146	6	S1553-a	9	39	3	39	11,47	64,55
147	6	S1553-a	9	39	3	39	11,47	64,55
148	6	S1553-a	9	39	3	39	11,47	64,55
149	6	S1553-a	9	39	3	39	11,47	64,55
150	6	S1553-a	9	39	3	39	11,47	64,55
151	6	S1553-a	9	39	3	39	11,47	64,55
152	6	S1553-a	9	39	3	39	11,47	64,55
153	6	S1553-a	9	39	3	39	11,47	64,55
154	6	S1553-a	9	39	3	39	11,47	64,55
155	6	S1553-a	9	39	3	39	11,47	64,55
156	6	S1553-a	9	39	3	39	11,47	64,55
157	6	S1553-a	9	39	3	39	11,47	64,55
158	6	S1553-a	9	39	3	39	11,47	64,55
159	6	S1553-a	9	39	3	39	11,47	64,55
160	6	S1553-a	9	39	3	39	11,47	64,55
161	6	S1553-a	9	39	3	39	11,47	64,55
162	6	S1553-a	9	39	3	39	11,47	64,55
163	6	S1553-a	9	39	3	39	11,47	64,55
164	6	S1553-a	9	39	3	39	11,47	64,55
165	6	S1553-a	9	39	3	39	11,47	64,55
166	6	S1553-a	9	39	3	39	11,47	64,55
167	6	S1553-a	9	39	3	39	11,47	64,55
168	6	S1553-a	9	39	3	39	11,47	64,55
169	6	S1553-a	9	39	3	39	11,47	64,55
170	6	S1553-a	9	39	3	39	11,47	64,55
171	6	S1553-a	9	39	3	39	11,47	64,55
172	6	S1553-a	9	39	3	39	11,47	64,55
173	6	S1553-a	9	39	3	39	11,47	64,55
174	6	S1553-a	9	39	3	39	11,47	64,55
175	6	S1553-a	9	39	3	39	11,47	64,55
176	6	S1553-a	9	39	3	39	11,47	64,55
177	6	S1553-a	9	39	3	39	11,47	64,55
178	6	S1553-a	9	39	3	39	11,47	64,55
179	6	S1553-a	9	39	3	39	11,47	64,55
180	6	S1553-a	9	39	3	39	11,47	64,55
181	6	S1553-a	9	39	3	39	11,47	64,55
182	6	S1553-a	9	39	3	39	11,47	64,55
183	6	S1553-a	9	39	3	39	11,47	64,55
184	6	S1553-a	9	39	3	39	11,47	64,55
185	6	S1553-a	9	39	3	39	11,47	64,55
186	6	S1553-a	9	39	3	39	11,47	64,55
187	6	S1553-a	9	39	3	39	11,47	64,55
188	6	S1553-a	9	39	3	39	11,47	64,55
189	6	S1553-a	9	39	3	39	11,47	64,55
190	6	S1553-a	9	39	3	39	11,47	64,55
191	6	S1553-a	9	39	3	39	11,47	64,55
192	6	S1553-a	9	39	3	39	11,47	64,55
193	6	S1553-a	9	39	3	39	11,47	64,55
194	6	S1553-a	9	39	3	39	11,47	64,55
195	6	S1553-a	9	39	3	39	11,47	64,55
196	6	S1553-a	9	39	3	39	11,47	64,55
197	6	S1553-a	9	39	3	39	11,47	64,55
198	6	S1553-a	9	39	3	39	11,47	64,55
199	6	S1553-a	9	39	3	39	11,47	64,55
200	6	S1553-a	9	39	3	39	11,47	64,55
201	6	S1553-a	9	39	3	39	11,47	64,55
202	6	S1553-a	9	39	3	39	11,47	64,55
203	6	S1553-a	9	39	3	39	11,47	64,55
204	6	S1553-a	9	39	3	39	11,47	64,55
205	6	S1553-a	9	39	3	39	11,47	64,55
206	6	S1553-a	9	39	3	39	11,47	64,55
207	6	S1553-a	9	39	3	39	11,47	64,55
208	6	S1553-a	9	39	3	39	11,47	64,55
209	6	S1553-a	9	39	3	39	11,47	64,55
210	6	S1553-a	9	39	3	39	11,47	64,55
211	6	S1553-a	9	39	3	39	11,47	64,55
212	6	S1553-a	9	39	3	39	11,47	64,55
213	6	S1553-a	9	39	3	39	11,47	64,55
214	6	S1553-a	9	39	3	39	11,47	64,55
215	6	S1553-a	9	39	3	39	11,47	64,55
216	6	S1553-a	9	39	3	39	11,47	64,55
217	6	S1553-a	9	39	3	39	11,47	64,55
218	6	S1553-a	9	39	3	39	11,47	64,55
219	6	S1553-a	9	39	3	39	11,47	64,55
220	6	S1553-a	9	39	3	39	11,47	64,55
221	6	S1553-a	9	39	3	39	11,47	64,55
222	6	S1553-a	9	39	3	39	11,47	64,55
223	6	S1553-a	9	39	3	39	11,47	64,55
224	6	S1553-a	9	39	3			

ZESTAWIENIE STAL

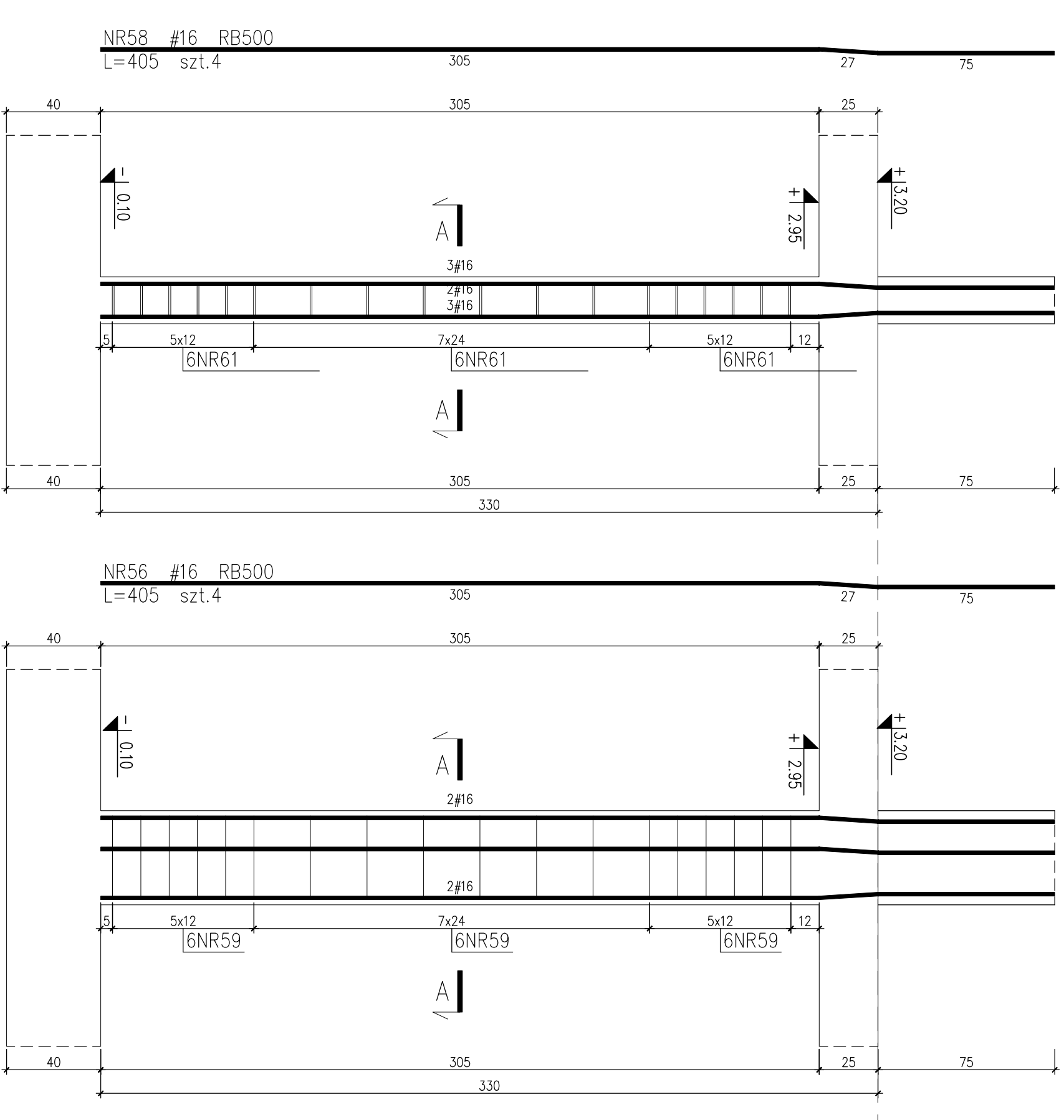
№	p	Soil	Dose of pesticide mg/m ²	pH		pH #2	SWS-b #6
				me / 100	mol / 100		
—	—	—	—	—	—	—	—
mm	—	cm	—	—	—	—	—
4.3	12	BS50	12	1	12	74.64	
4.4	12	BS40	16.5	12	1	19.86	
4.5	12	SWS-b	16.5	34	1	30.94	
4.6	12	SWS-b	34	34	1	25.95	
4.7	12	SWS-b	34	34	1	23.67	
4.8	12	SWS-b	34	34	1	21.67	
4.9	12	SWS-b	34	34	1	20.67	
4.10	12	SWS-b	34	34	1	19.67	
4.11	12	SWS-b	34	34	1	18.67	
4.12	12	SWS-b	34	34	1	17.67	
4.13	12	SWS-b	34	34	1	16.67	
4.14	12	SWS-b	34	34	1	15.67	
4.15	12	SWS-b	34	34	1	14.67	
4.16	12	SWS-b	34	34	1	13.67	
4.17	12	SWS-b	34	34	1	12.67	
4.18	12	SWS-b	34	34	1	11.67	
4.19	12	SWS-b	34	34	1	10.67	
4.20	12	SWS-b	34	34	1	9.67	
4.21	12	SWS-b	34	34	1	8.67	
4.22	12	SWS-b	34	34	1	7.67	
4.23	12	SWS-b	34	34	1	6.67	
4.24	12	SWS-b	34	34	1	5.67	
4.25	12	SWS-b	34	34	1	4.67	
4.26	12	SWS-b	34	34	1	3.67	
4.27	12	SWS-b	34	34	1	2.67	
4.28	12	SWS-b	34	34	1	1.67	
4.29	12	SWS-b	34	34	1	0.67	
4.30	12	SWS-b	34	34	1	0.67	
4.31	12	SWS-b	34	34	1	0.67	
4.32	12	SWS-b	34	34	1	0.67	
4.33	12	SWS-b	34	34	1	0.67	
4.34	12	SWS-b	34	34	1	0.67	
4.35	12	SWS-b	34	34	1	0.67	
4.36	12	SWS-b	34	34	1	0.67	
4.37	12	SWS-b	34	34	1	0.67	
4.38	12	SWS-b	34	34	1	0.67	
4.39	12	SWS-b	34	34	1	0.67	
4.40	12	SWS-b	34	34	1	0.67	
4.41	12	SWS-b	34	34	1	0.67	
4.42	12	SWS-b	34	34	1	0.67	
4.43	12	SWS-b	34	34	1	0.67	
4.44	12	SWS-b	34	34	1	0.67	
4.45	12	SWS-b	34	34	1	0.67	
4.46	12	SWS-b	34	34	1	0.67	
4.47	12	SWS-b	34	34	1	0.67	
4.48	12	SWS-b	34	34	1	0.67	
4.49	12	SWS-b	34	34	1	0.67	
4.50	12	SWS-b	34	34	1	0.67	
4.51	12	SWS-b	34	34	1	0.67	
4.52	12	SWS-b	34	34	1	0.67	
4.53	12	SWS-b	34	34	1	0.67	
4.54	12	SWS-b	34	34	1	0.67	
4.55	12	SWS-b	34	34	1	0.67	
4.56	12	SWS-b	34	34	1	0.67	
4.57	12	SWS-b	34	34	1	0.67	
4.58	12	SWS-b	34	34	1	0.67	
4.59	12	SWS-b	34	34	1	0.67	
4.60	12	SWS-b	34	34	1	0.67	
4.61	12	SWS-b	34	34	1	0.67	
4.62	12	SWS-b	34	34	1	0.67	
4.63	12	SWS-b	34	34	1	0.67	
4.64	12	SWS-b	34	34	1	0.67	
4.65	12	SWS-b	34	34	1	0.67	
4.66	12	SWS-b	34	34	1	0.67	
4.67	12	SWS-b	34	34	1	0.67	
4.68	12	SWS-b	34	34	1	0.67	
4.69	12	SWS-b	34	34	1	0.67	
4.70	12	SWS-b	34	34	1	0.67	
4.71	12	SWS-b	34	34	1	0.67	
4.72	12	SWS-b	34	34	1	0.67	
4.73	12	SWS-b	34	34	1	0.67	
4.74	12	SWS-b	34	34	1	0.67	
4.75	12	SWS-b	34	34	1	0.67	
4.76	12	SWS-b	34	34	1	0.67	
4.77	12	SWS-b	34	34	1	0.67	
4.78	12	SWS-b	34	34	1	0.67	
4.79	12	SWS-b	34	34	1	0.67	
4.80	12	SWS-b	34	34	1	0.67	
4.81	12	SWS-b	34	34	1	0.67	
4.82	12	SWS-b	34	34	1	0.67	
4.83	12	SWS-b	34	34	1	0.67	
4.84	12	SWS-b	34	34	1	0.67	
4.85	12	SWS-b	34	34	1	0.67	
4.86	12	SWS-b	34	34	1	0.67	
4.87	12	SWS-b	34	34	1	0.67	
4.88	12	SWS-b	34	34	1	0.67	
4.89	12	SWS-b	34	34	1	0.67	
4.90	12	SWS-b	34	34	1	0.67	
4.91	12	SWS-b	34	34	1	0.67	
4.92	12	SWS-b	34	34	1	0.67	
4.93	12	SWS-b	34	34	1	0.67	
4.94	12	SWS-b	34	34	1	0.67	
4.95	12	SWS-b	34	34	1	0.67	
4.96	12	SWS-b	34	34	1	0.67	
4.97	12	SWS-b	34	34	1	0.67	
4.98	12	SWS-b	34	34	1	0.67	
4.99	12	SWS-b	34	34	1	0.67	
5.00	12	SWS-b	34	34	1	0.67	



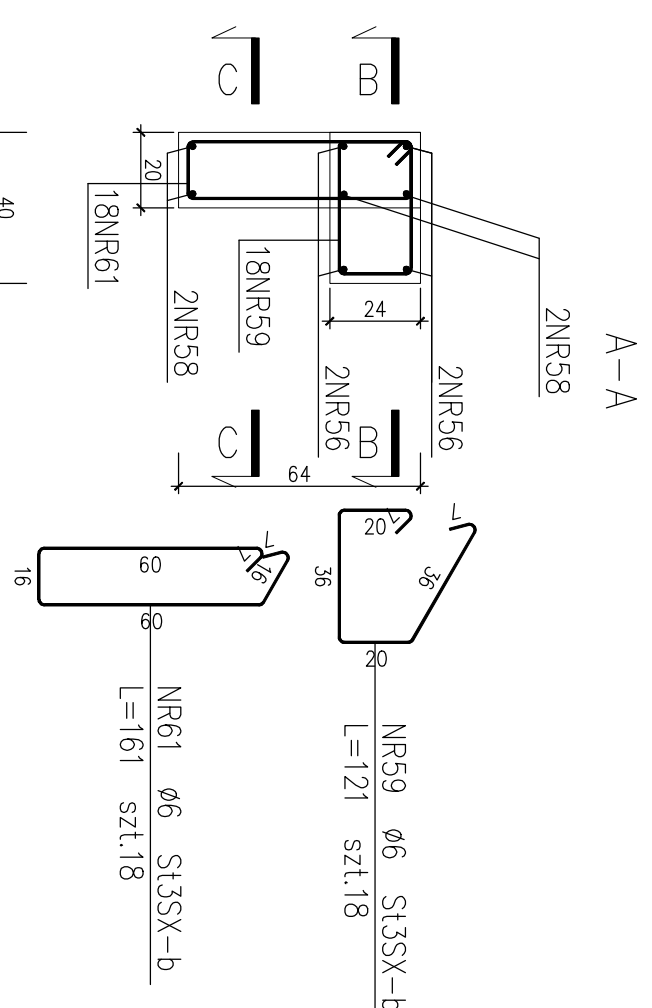
SKUP ZELBELOWY SZ-154 -1 szt



GRUPA ŻELBETOWY SZ-11 - 8 szt.



ZESTAWIENIE STALI

[illegible]

ENCJIL SIARLOWE UCIE I ZESTAWIENIU ZBROJENIA STOPY

Beton	B37 (C30/37)
Stal	St05-b RB500
Otulina	20 mm

[illegible]